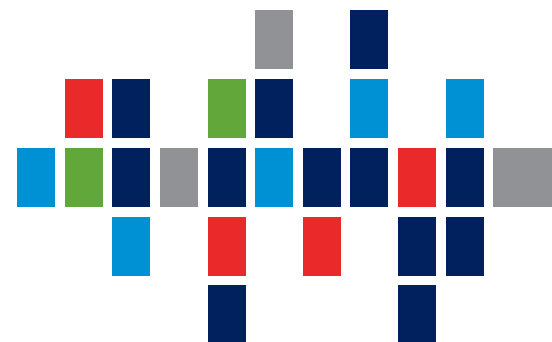


BCN regulations

- Keep 1.5 meter distance anywhere at the venue
- During busy walk ins BCN employees will make use of a corona door policy
- Disinfect your hands at the entry
- Wash your hands regularly
- Only make use of the stairs
- Pay attention to the walking routes IN and UIT
- Coffee lounges exclusively to pick up consumptions
- Consumption exclusively inside your room
- Limit visits to the front desk, use the phone in your room (9)

BCN UTRECHT CS

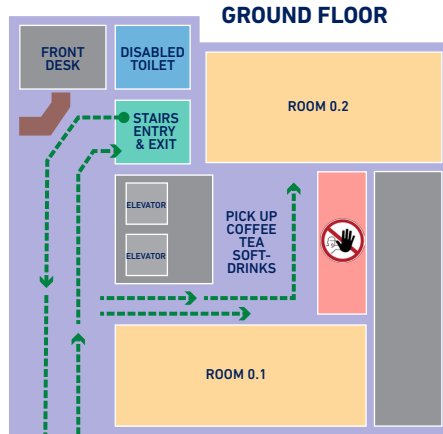
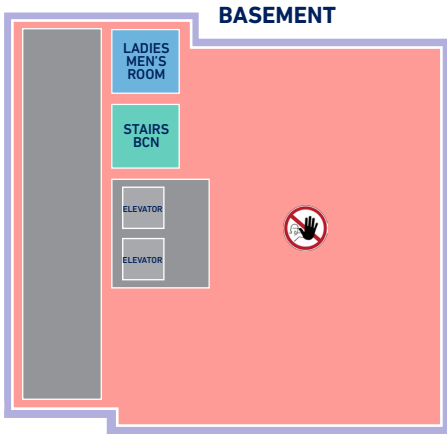


Welcome guests BCN

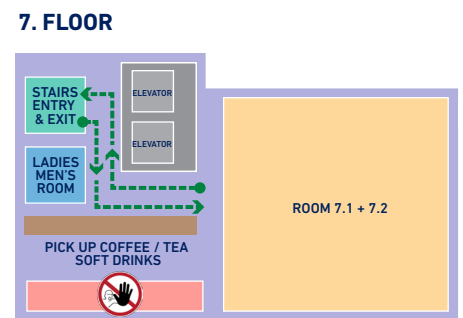
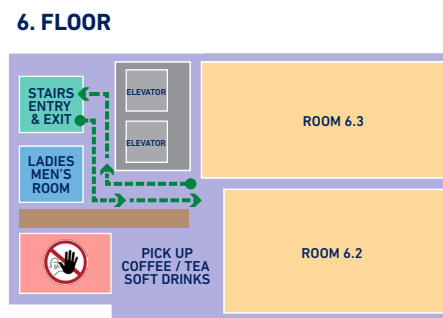
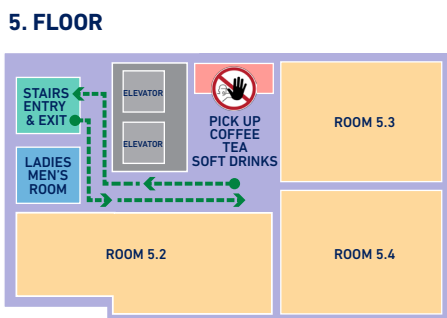
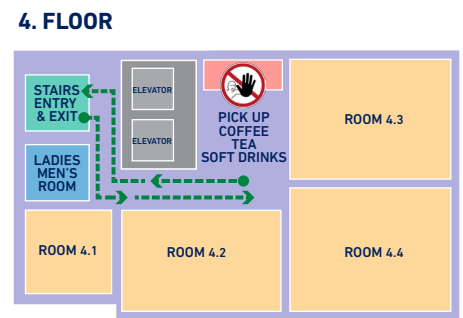
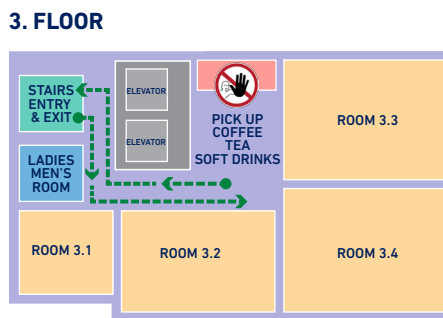
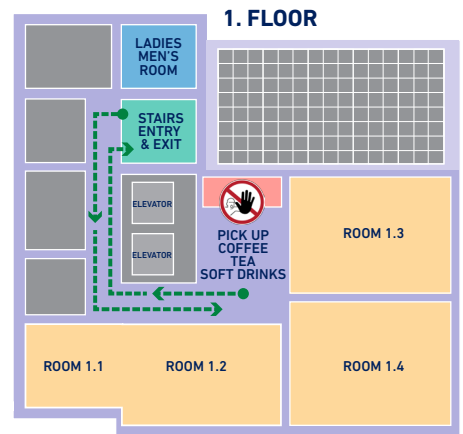


trainingen
opleidingen
cursussen
workshops
vergaderingen





ENTRY & EXIT BCN



Welcome guests BCN

*trainingen
opleidingen
cursussen
workshops
vergaderingen*

