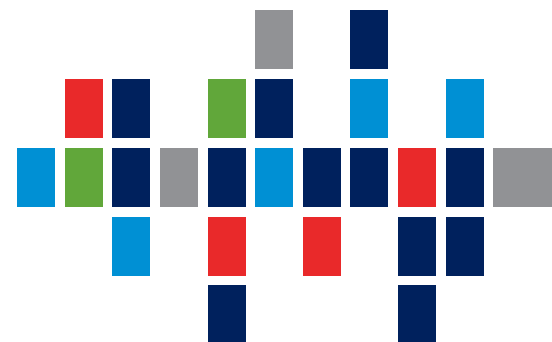


## BCN regulations

- Keep 1.5 meter distance anywhere at the venue
- During busy walk ins BCN employees will make use of a corona door policy
- Disinfect your hands at the entry
- Wash your hands regularly
- Only make use of the stairs
- Pay attention to the walking routes IN and UIT
- Coffee lounges exclusively to pick up consumptions
- Consumption exclusively inside your room
- Limit visits to the front desk, use the phone in your room (9)

## BCN ZWOLLE

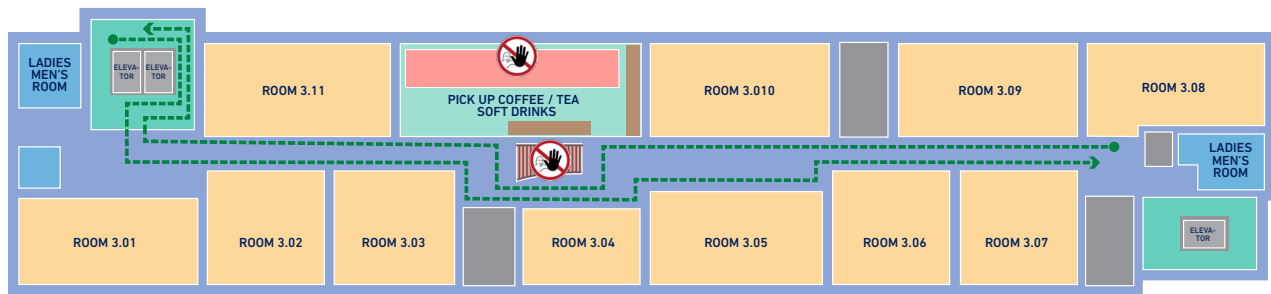
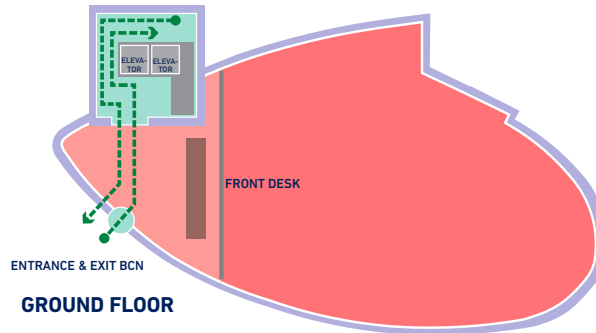


**Welcome guests BCN**



*trainingen  
opleidingen  
cursussen  
workshops  
vergaderingen*

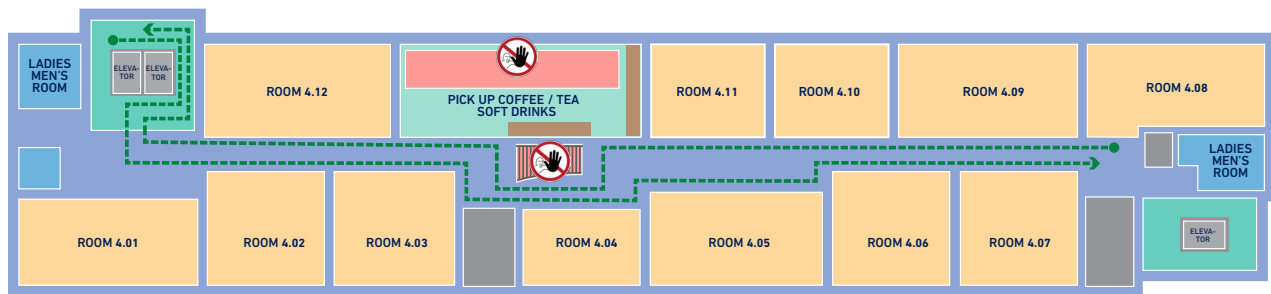




**3. FLOOR**

KEEP DISTANCE  
1.5 METER

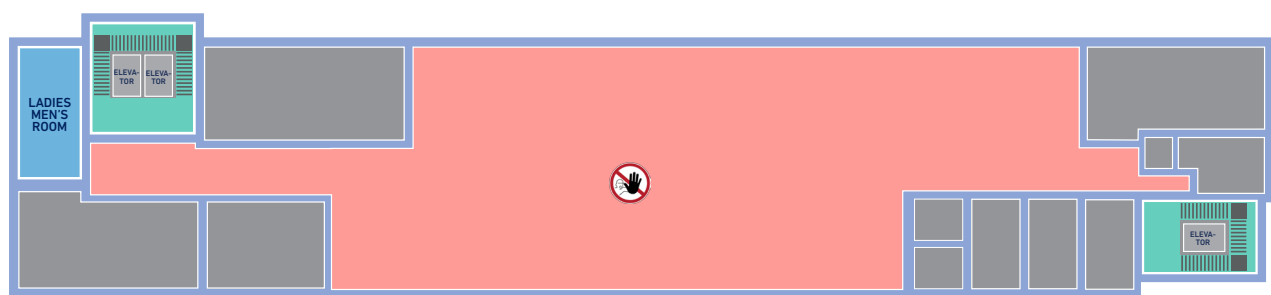
CLOSED SECTION



**4. FLOOR**

KEEP DISTANCE  
1.5 METER

CLOSED SECTION



**5. FLOOR**

KEEP DISTANCE  
1.5 METER

CLOSED SECTION

**Welcome guests BCN**



- trainingen*
- opleidingen*
- cursussen*
- workshops*
- vergaderingen*

